

SafeAir1 Firewall Pass-Thru System

Firewall

Forward Aft

Overall flange diameter is 2 & 1/2"

This disc captures the FPT on the front face of the firewall.

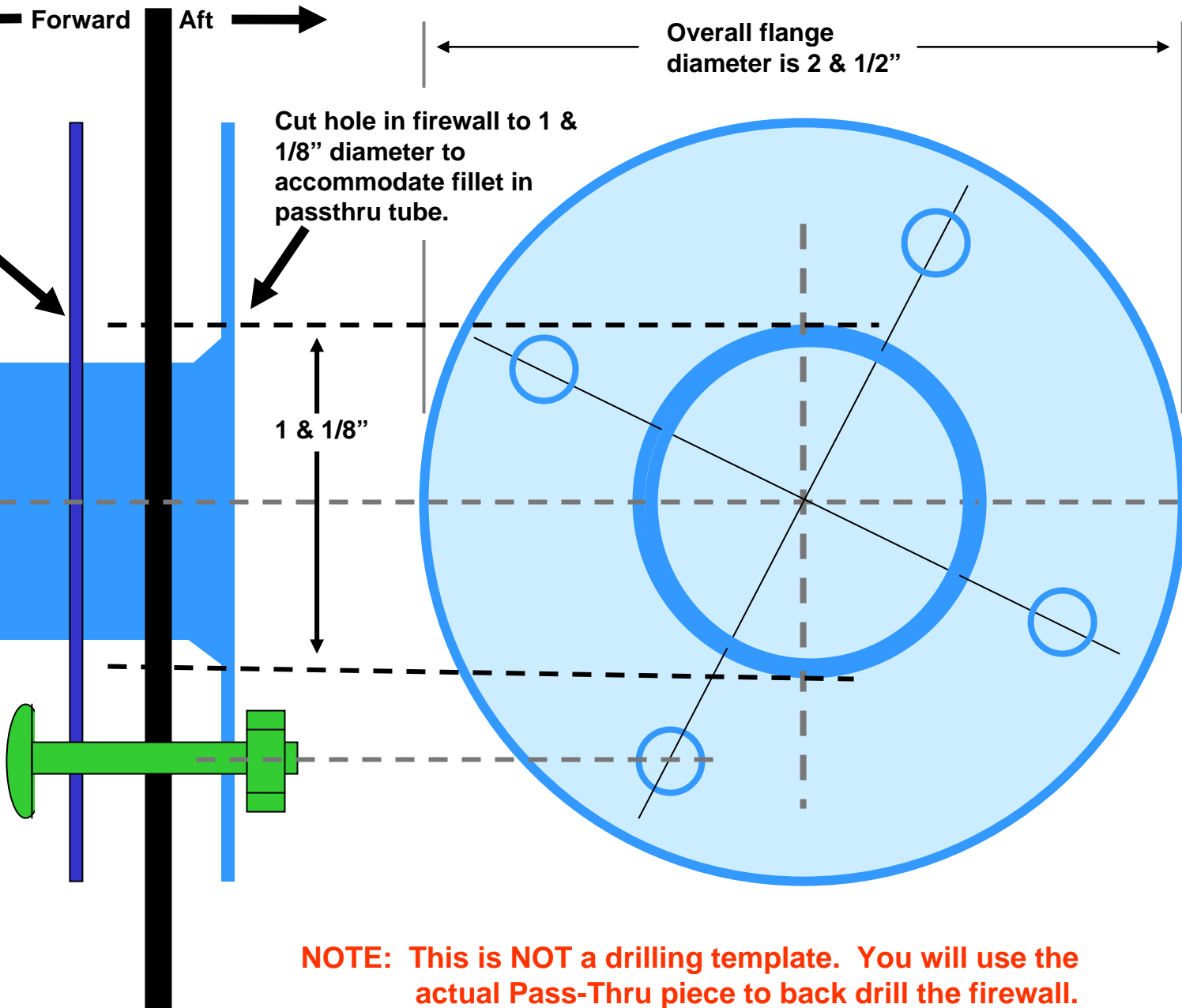
Cut hole in firewall to 1 & 1/8" diameter to accommodate fillet in passthru tube.

Tube internal diameter is 0.9"

1 & 1/8"

Fastener hardware is included in kit. 4 x #8-32 stainless panhead screw, washer, locknut.

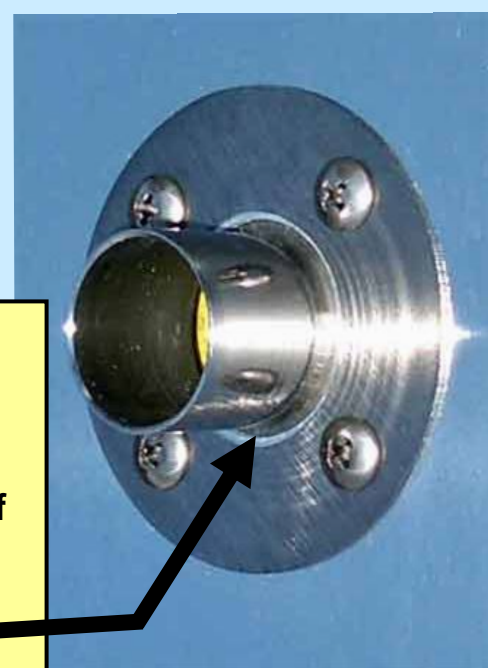
NOTE: This is NOT a drilling template. You will use the actual Pass-Thru piece to back drill the firewall.



Cabin (AFT) side view of firewall



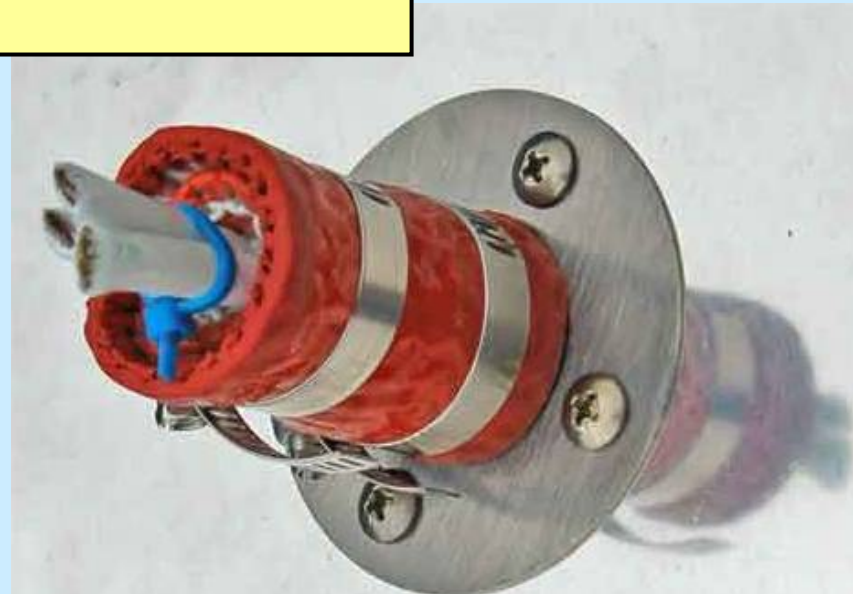
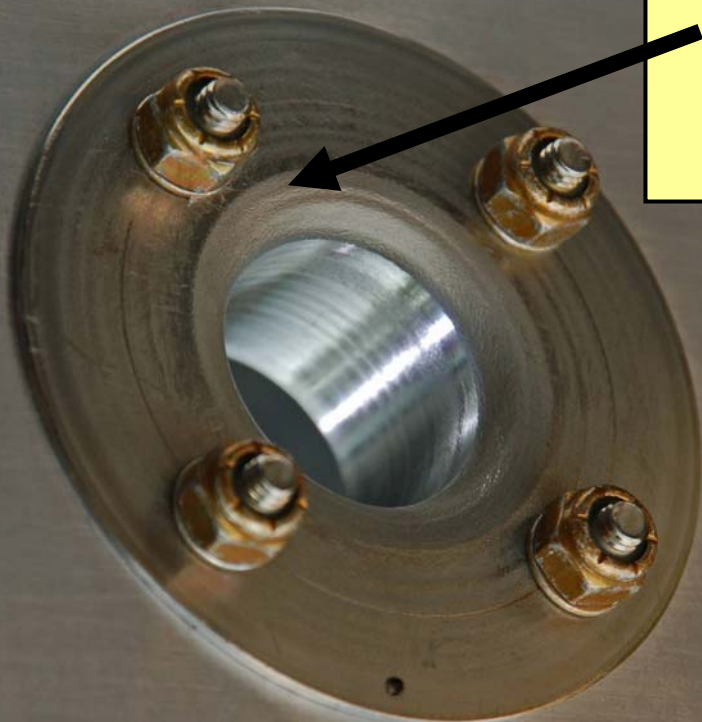
Passthru tube is installed on the AFT side of the firewall and protrudes through the firewall. The stainless disc is on the FORWARD side of the firewall and captures the Passthru tube.



A *SafeAir1* exclusive...

Smooth SPIN-RADIUSED tube prevents cutting or chafing of wires, cables, and soft tubing that is passed through the firewall and Pass-Thru.

Safety is enhanced !!



Engine (FORWARD) side view of firewall